

CARBON MONOXIDE ORDINANCE FACTS

*State of Wisconsin Rules. ss. 101.149(2) and (3)
Comm. 62.1200. Comm.21.097*

Carbon Monoxide Hazards / Concerns

- CO is a colorless, odorless and tasteless, yet highly toxic gas.
- Most people will not experience any symptoms from prolonged exposure to CO levels of approximately 1 to 70 ppm, but some heart patients might experience an increase in chest pain.
- As CO levels increase and remain above 70 ppm, symptoms become more noticeable and can include headache, fatigue and nausea. At sustained CO concentrations above 150 to 200 ppm, disorientation, unconsciousness, and death are possible.

Loss Data

- According to the Consumer Products Safety Commission (CPSC), more than 2,500 people will die and over 100,000 will suffer from serious injuries over the next ten years due to CO poisoning.

Who Must Comply?

- New licensed tourist rooming houses
- New commercial buildings (residential)
- Existing commercial buildings (residential)
- Existing multifamily buildings

Why Now?

- The City of Madison will be enforcing the State of Wisconsin Ordinance that goes into effect on April 1st, 2010.

Maintenance of Alarms

- Owner shall maintain alarms.
- Tenant must notify the owner if alarm is not functional or has been removed by a person other than the occupant.
- The owner of the residential building shall repair or replace the nonfunctional or missing carbon monoxide detector within 5 days after receipt of the notice.

Residential & Commercial Services

SECURITY & SAFETY

Fire alarm installation,
monitoring and testing

Burglar alarm installation, monitoring
and authority notification

Video Surveillance & CCTV

Digital recording and remote access

Biometrics

Card Access Systems

Intercoms

Keypads

Telephone entry

Door timers

Power door openers

Locks, doorknobs, deadbolts, locksets

NEW SOLUTIONS

Home Theater Systems

Home Theater Installation

Retrofit LED lighting

J & K SECURITY SOLUTIONS

Certified, Bonded & Insured

Member of the National Fire Protection Association

Wisconsin Burglar & Fire Alarm Association

Apartment Association of South Central Wisconsin

**FOR MORE INFORMATION
CALL 608.255.5799**

CARBON MONOXIDE ALARMS ORDINANCE COMPLIANCE




**J&K SECURITY
SOLUTIONS**
Your Full Service Security Professionals

INSTALLATION AVAILABLE

1605 S. Park Street • Madison, WI 53715
608.255.5799 • www.jksecurity.com

J & K Security Solutions is available to help you map locations compliant to the State Ordinance.

CARBON MONOXIDE ALARM REQUIREMENTS

Types of Alarms Required

- Listed and labeled to comply with UL 2034 (or similar mark from an independent product safety certification organization).
- Single and Multiple Station Carbon Monoxide Alarms
- Battery powered, electrical outlet plug-in and/or direct wired to buildings electrical system
- New construction requires alarms powered by the building's electrical system with battery backup
- New construction requires interconnection of the alarms within the unit

CO Alarms Required Where Fuel Burning Appliances Are Present

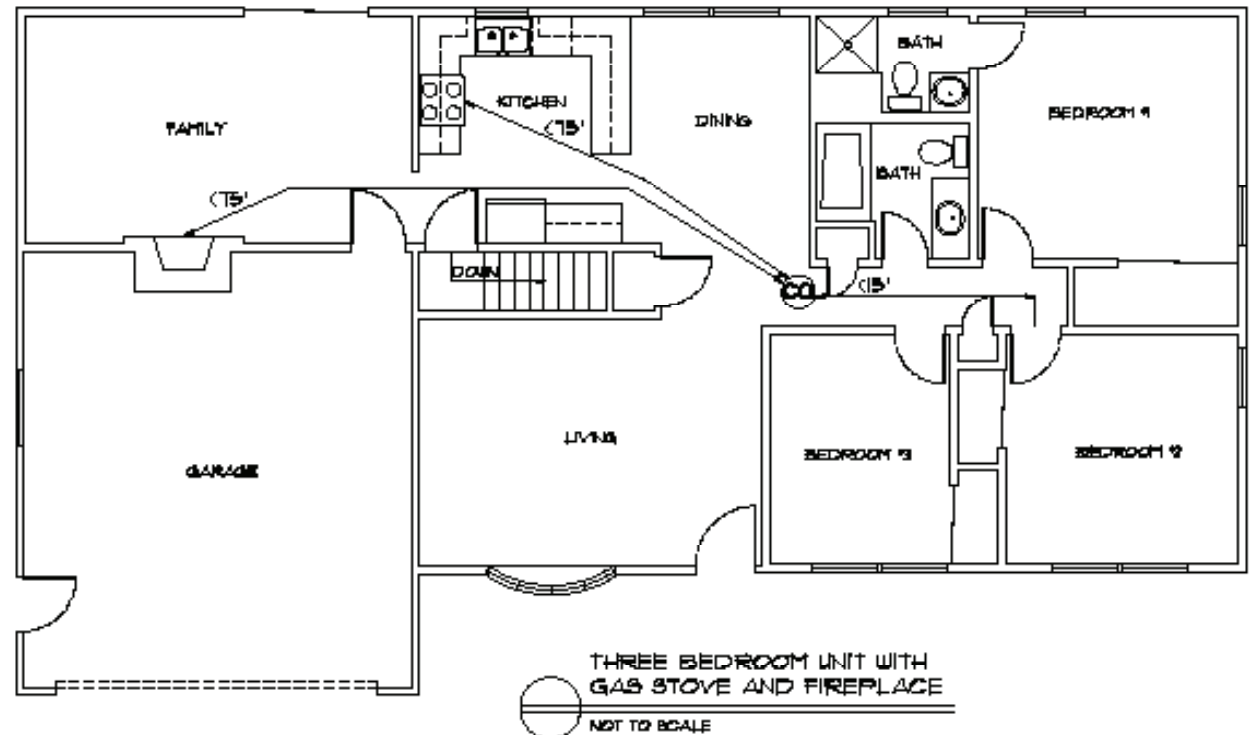
- Fossil fuels (coal, oil, natural gas, LP gas)
- Carbon based fuels (petroleum and wood) where carbon monoxide is a by-product of combustion
- Stoves, ovens, grills, clothes dryers, furnaces, boilers, water heaters, heaters, fireplaces and stoves (wood)

CO Alarms Are Not Required If . . .

- No attached garage
- No fuel-burning appliances
- Sealed combustion fuel-burning appliances under warranty, or
- Sealed combustion fuel-burning appliances inspected in accordance with Commerce rules.

Alarms Required In ALL of the Following Places:

- Basement, if basement has fuel-burning appliance
- Within 15 feet of each sleeping area, if the unit has a fuel-burning appliance
- Within 15 feet of each sleeping area, if the unit is adjacent to a unit with a fuel-burning appliance (shared or common walls).
- In each room that has a fuel burning appliance and that is not used as a sleeping area. The alarm must be installed not more than 75 feet from the fuel burning appliance.
- Again, alarms must be installed in accordance with "the directions and specifications of the manufacturer" of the alarm.
- In each hallway (common use), leading from a unit that has a fuel-burning appliance, in a location that is within 75 feet from the unit, if there is no electrical outlet within this distance, the owner shall place the carbon monoxide alarm at the closest available electrical outlet in the hallway.



**ACCEPTED BY THE
MADISON FIRE DEPARTMENT**

**Get prices lower than retail
outlets through J & K's special
purchasing program!**

**Call now to reserve yours at 608.255.5799
Hurry while supplies last!
You must comply by April 1st.**

**J&K SECURITY
SOLUTIONS**
Your Full Service Security Professionals

**1605 S. Park Street • Madison, WI 53715
608.255.5799 • www.jksecurity.com**